

Breadcrumb

1. [Hogar](#)
2. Print
3. Pdf
4. Node
5. Entity Print

Plant Pests and Diseases

Last Modified:

When plant pests capable of harming our Nation's forests, damaging U.S. crops, or disrupting trade become established in the United States, we work to control and, when possible, eliminate them from our country.

Plant Pests

[Insects and Mites](#)



Insects and Mites

- [Asian Longhorned Beetle](#)

- [Box Tree Moth](#)
- [Coconut Rhinoceros Beetle](#)
- [Cotton Pests](#)
- [Emerald Ash Borer](#)
- [European Grapevine Moth](#)
- [Flighted Spongy Moth Complex](#)
- [Fruit Flies](#)
- [Glassy-Winged Sharpshooter](#)
- [Grasshopper/Mormon Cricket](#)
- [Honey Bee Pests](#)
- [Imported Fire Ants](#)
- [Japanese Beetle](#)
- [Old World Bollworm](#)
- [South American Cactus Moth](#)
- [Spongy Moth](#)
- [Spotted Lanternfly](#)

Mollusks



Mollusks

- [Giant African Snail](#)

Nematodes



Nematodes

- [Golden Nematode](#)
- [Pale Cyst Nematode](#)

Noxious Weeds



Noxious Weeds

- [Noxious Weeds Program](#)
- [Witchweed](#)

Browse by Plant Pest (A-Z):

- [Asian Longhorned Beetle](#)
- [Box Tree Moth](#)
- [Coconut Rhinoceros Beetle](#)
- [Cotton Pests](#)
- [Emerald Ash Borer](#)
- [European Grapevine Moth](#)
- [Flighted Spongy Moth Complex](#)
- [Fruit Flies](#)
- [Giant African Snail](#)
- [Glassy-Winged Sharpshooter](#)
- [Golden Nematode](#)

- [Grasshopper/Mormon Cricket](#)
- [Honey Bee Pests](#)
- [Imported Fire Ants](#)
- [Japanese Beetle](#)
- [Old World Bollworm](#)
- [Pale Cyst Nematode](#)
- [South American Cactus Moth](#)
- [Spongy Moth](#)
- [Spotted Lanternfly](#)
- [Witchweed](#)

Plant Diseases

[Black Stem Rust and Barberry](#)



[Chrysanthemum White Rust](#)



[Citrus Diseases](#)



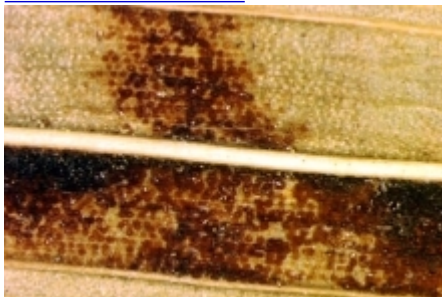
[Cucumber Green Mottle Mosaic Virus](#)



European Larch Canker



Gladiolus Rust



Karnal Bunt



Phytophthora ramorum



Plum Pox



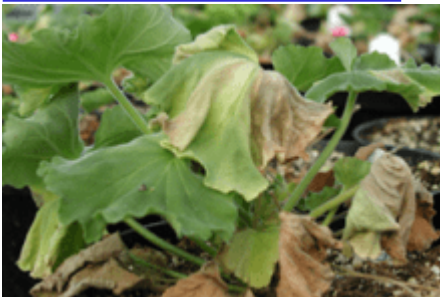
Potato Diseases



Potato Diseases

- [Dickeya](#)
- [Potato Virus Y](#)
- [Potato Wart](#)

Ralstonia Solanacearum



Sugarcane Diseases



[Thousand Cankers Disease](#)



Plant Pest Services and Activities

[PPA 7721: Plant Pest and Disease Management and Disaster Prevention Program](#)

[Learn about funding opportunities for projects that help control invasive plant pests and diseases.](#)

[PPA 7721: National Clean Plant Network](#)

[The National Clean Plant Network \(NCPN\) protects healthy U.S. agriculture by providing "clean" plant propagative material free of targeted pathogens and pests. Learn about NCPN funding opportunities.](#)

[Cooperative Agricultural Pest Survey](#)

[Learn how APHIS and partners conduct exotic plant pest surveys to protect U.S. agriculture and natural resources.](#)

[Biological Control Program](#)

[Learn how APHIS works with cooperators to develop and use biological control technologies to manage pests.](#)

[Plant Health Domestic Program and Emergency Response Manuals](#)

[View manuals APHIS employees and others authorized by APHIS use to carry out official plant health programs and emergency response operations.](#)

[Federally Recognized State Managed Phytosanitary Program](#)

[Learn how States may petition APHIS to recognize State-managed plant health programs and harmonize import and interstate requirements for pests not regulated at the Federal level.](#)

[National Honey Bee Surveys](#)

[Learn more about this national, APHIS-funded survey that is the most comprehensive honey bee pest and health survey to date.](#)

[Integrated Plant Health Information System](#)

[Learn how this web-based system supports real-time data collection and management for domestic and emergency pest programs.](#)

[Request APHIS Confirmation of a Preliminary Pest Identification](#)

[Learn about the process APHIS follows for officially confirming pest identifications that are preliminarily made by a Federal or State official or competent private entity.](#)

[Special Needs Request](#)

[Learn how States can ask permission to impose additional restrictions on items moving interstate that pose a plant health risk.](#)

[Electronic End User Tools](#)

[Learn about the mobile data collection tools.](#)

[Print](#)